



EU IWT policies and the NAIADES III Action plan 2021-2027

INFUTURE Final Conference

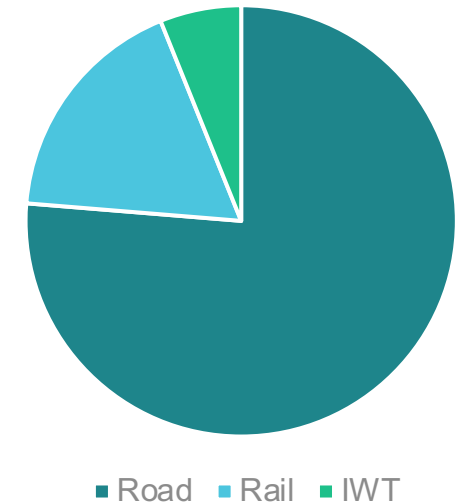
- A Step Towards Green Transition – 30 November 2021

*Marta Wolska, Policy Officer
DG MOVE Unit D.3 Ports and
Inland Navigation,
European Commission*

Background

- 41,000 km of inland waterways flow through 25 EU MS
- >15,000 km of TEN-T inland waterways
- Secondary network also important for regional transport
+/- 26,000 km
- 150 bn tkm of cargo every year
- 44,000 people work on inland vessels (60% goods, 40% passengers)
- 75% of inland waterway navigation takes place across borders
- IWT modal share is 43% in NL, 28% in RO and 31% in BG in 2019*

**Modal split: only 6%
across EU**

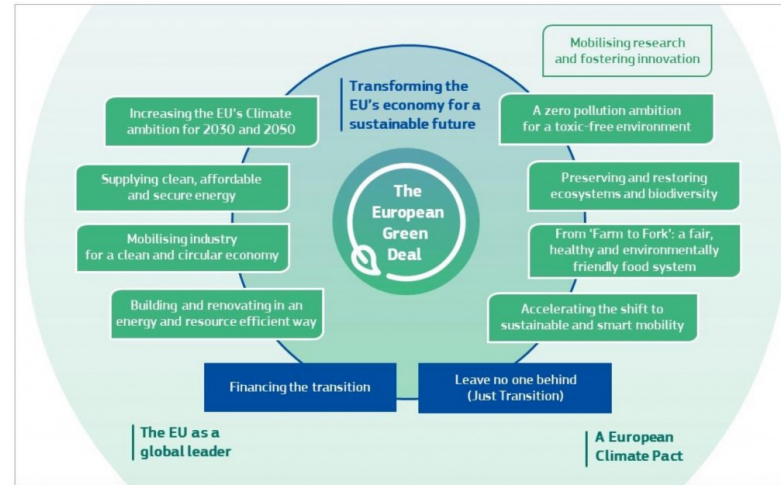


*Source: CCNR Market Observation Report 2021

Context



Green Deal



European Green Deal:

-> called for decisive action to shift a substantial part of the freight transported by road (currently accounting for 75% of inland freight) to inland navigation and rail -> measures to increase the capacity of inland waterways from 2021

Sustainable and Smart Mobility Strategy:

-> inland waterway transport and short-sea shipping to increase by 25% by 2030 and by 50% by 2050

NAIADES III Action Plan 2021-2027



Brussels, 24.6.2021
COM(2021) 324 final

**COMMUNICATION FROM THE COMMISSION TO THE EUROPEAN
PARLIAMENT, THE COUNCIL, THE EUROPEAN ECONOMIC AND SOCIAL
COMMITTEE AND THE COMMITTEE OF THE REGIONS**

NAIADES III:

Boosting future-proof European inland waterway transport

2 core
objectives

8 policy
flagships

35 action
plan
measures

[https://eur-lex.europa.eu/legal-content/EN/TXT/?uri=CELEX:52021DC0324R\(01\)](https://eur-lex.europa.eu/legal-content/EN/TXT/?uri=CELEX:52021DC0324R(01))

NAIADES III Action Plan 2021-2027: 2 core objectives

- **2 core objectives of the “Inland Navigation Action Plan 2021-2027” :**
 - (A) shifting more freight transport to inland waterways
 - (B) a irreversible path towards zero emission inland vessels

And:

- further digitalization
- measures to support the current and future workforce
- timing of the action plan aligned to the new multi-annual financial framework

(A) shifting more freight transport to inland waterways

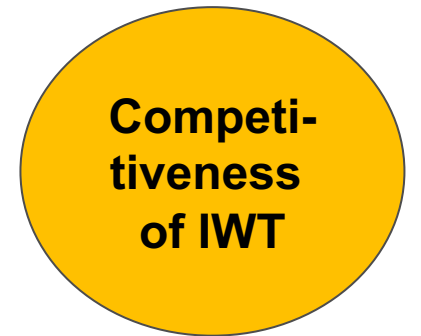
- Fit-for-future infrastructure for optimised navigation
- Seamless integration into multimodal mobility and logistics systems
- Boosting the uptake of more sustainable transport modes
- A well-functioning inland waterways internal market

(B) an irreversible path towards zero emissions

- Towards a zero-emissions fleet
- Greening inland waterways infrastructure and ports

Smart inland waterway transport

- Further digitalization:
 - to enable better integration with other modes
 - to facilitate the flow of documents and reduce administrative burden
 - to improve efficiency and reliability of navigation and traffic management, as well as port operations
 - RIS evaluation and RIS revision, eFTI, ...



+ More attractive and sustainable jobs in IWT

+ Governance

Financing through a variety of EU funding instruments

- **CEF II** – call for proposals 2021 **OPEN !!!**
- **Horizon Europe** – will be launched 2 Dec 2021
- **The LIFE Programme** - call for proposals 2021 **OPEN !!!**
- **European Regional Development Fund / Cohesion Fund**
- **Recover and Resilience Fund (RRF)**
- **Invest EU** (incl. the Sustainable Infrastructure Window)

35 action plan measures

2 core objectives

8 policy flagships

35 action plan measures

ANNEX: ACTION PLAN

SHIFTING MORE FREIGHT TRANSPORT TO INLAND WATERWAYS	
1. Continued support for innovative infrastructure and deployment through Horizon Europe and CEF	From 2021
2. Revision of the TEN-T Regulation – Inland waterway transport requirements and role of coordinators	2021
3. Deployment of cross-disciplinary digital information and operation systems for water- and waterway management through CEF	From 2022
4. Transport crisis contingency plan(s)	2022
5. Review of the regulatory framework for intermodal transport, including the Combined Transport Directive	2022
6. Issue guidelines for operators and platforms on informing users about the carbon footprint of their deliveries and on offering sustainable delivery choices	2023
7. Review the inland waterway transport market access legislation	2022
8. Evaluation of the Directive (EU) 2016/1629 on technical requirements for inland vessels	2022
TOWARDS ZERO-EMISSION INLAND WATERWAY TRANSPORT	
9. Specific actions arising from the Mission on Healthy Oceans, Seas, Coastal and Inland Waters and from the Zero-Emission Waterborne Transport Partnership/Green Hydrogen partnership	From 2021
10. Support through CEF for the deployment of zero-emission inland vessels	From 2021
11. Facilitate through the H2020 Platina III project the elaboration of an EU energy index methodology for assessing carbon intensity levels of inland waterways vessels	2022
12. Evaluate the procedure for allowing derogations in the context of Directive (EU) 2016/1629 for encouraging the navigation of zero-emission vessels on EU waterways	2023
13. Analysis to assess the need for measures for promoting low carbon/zero-emission vessels.	2025
14. Revision of the railways State aid guidelines – possible inclusion of IWT and possible block exemption of aid for the coordination of transport	From 2021 to 2023
15. Revision of the State aid guidelines for environmental protection and energy, as well as the State aid Framework for research, development and innovation	2021
16. Technical Guidance document on climate proofing on infrastructure in the period 2021-2027	2021
17. Study to support the greening of inland ports	2021
18. Revision of the Alternative Fuels Infrastructure Directive and a roll-out plan with funding opportunities and requirements	2021
19. Request the European Standardisation Organisation for harmonised standards for alternative fuels infrastructure for inland waterways and ports	2021
20. Continuous support for innovative and alternative fuels infrastructure and deployment through Horizon Europe and CEF	From 2021
21. An assessment of the needs of waste reception infrastructure and and degassing facilities	2024
22. Revision of the Delegated Regulation (EU) 2017/1926 on multimodal travel information services with inclusion of inland waterway transport	2022

Thank You!

Marta.WOLSKA@ec.europa.eu

Unit D.3 Ports and Inland Navigation